

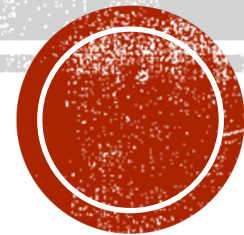
BIOMEDICAL WASTE SEGREGATION

DR. AMANDEEP KAUR

Assistant Professor

Department of Community Medicine & Family Medicine

AIIMS Kalyani



BIOMEDICAL WASTE MANAGEMENT — IN NEWS

medical college flout biomedical waste rules

TNN | Updated: Jul 28, 2019, 14:22 IST



Biomedical waste is being thrown out in the open area of the hospital

gets two notices on dumping biomedical waste

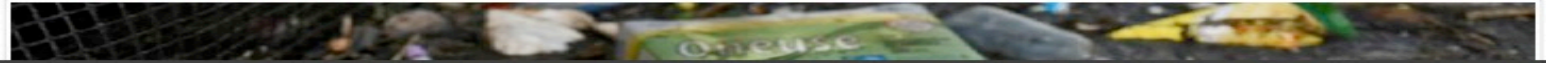
TNN | Jul 23, 2019, 12:57 PM IST

government hospitals yet to comply with biomedical waste disposal rules

On Wednesday, the Delhi Pollution Control Committee issued an ultimatum to all non-bedded health care facilities in the city to obtain authorisation by April 25 under Bio-medical Waste Management Rules 2016 or face closure.

DELHI Updated: Apr 11, 2019 14:26 IST

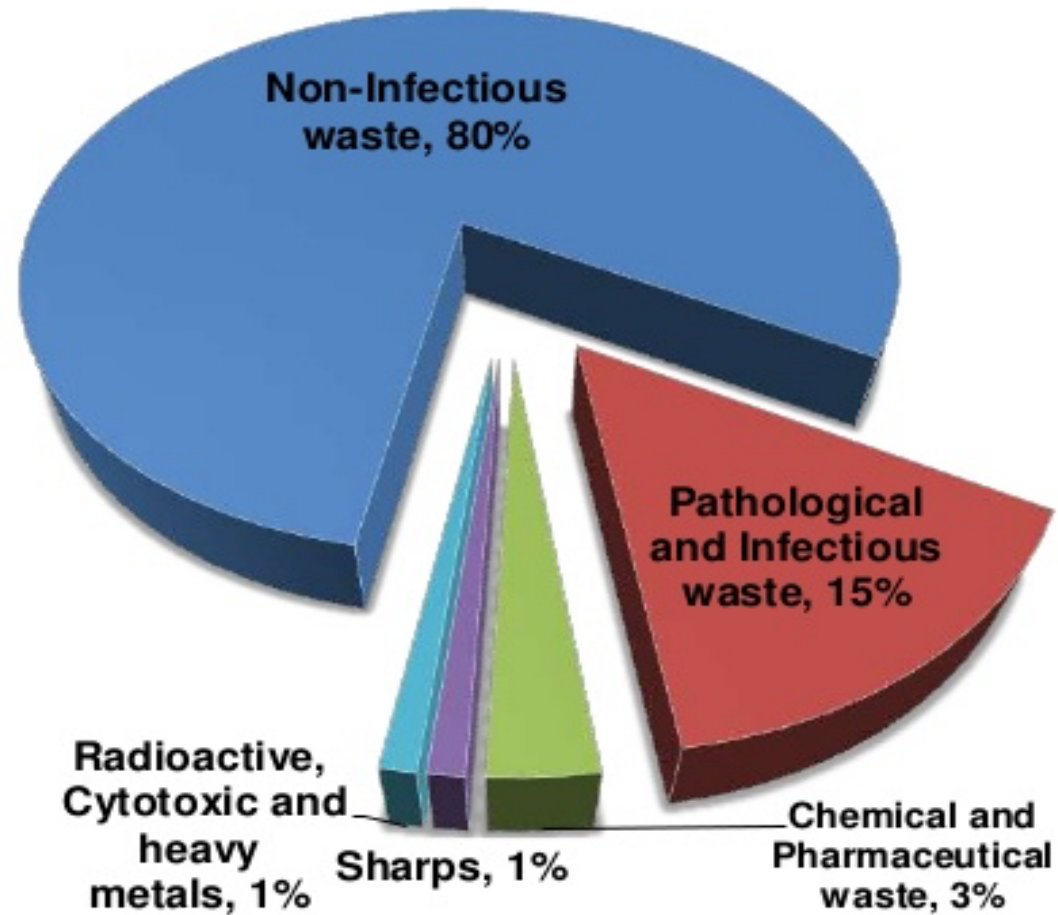
ht Hindustan Times, New Delhi



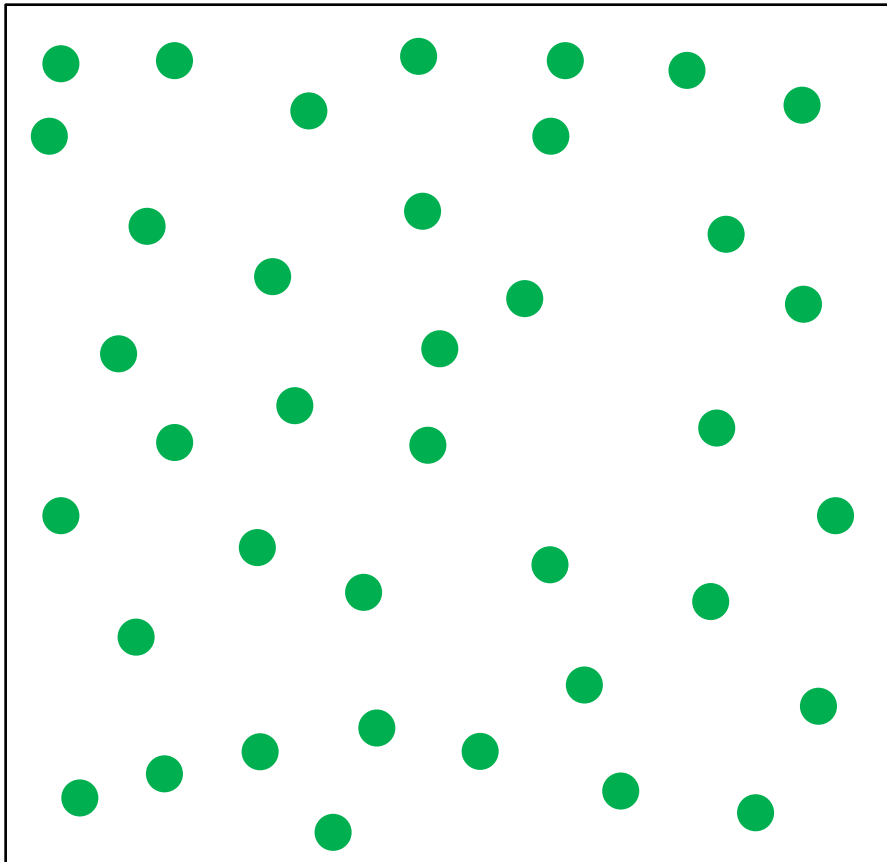
india cities opinion world cricket entertainment gurugram it's viral ht-weekend videos health real-estate lifestyle tech



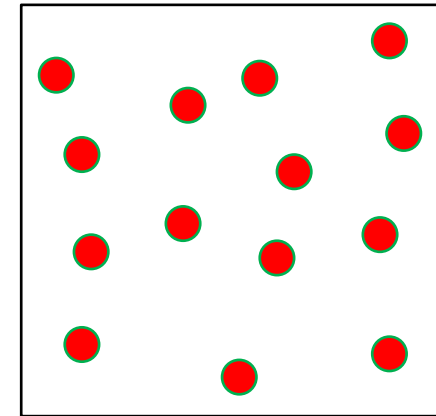
NEED OF SEGREGATION



NEED OF SEGREGATION



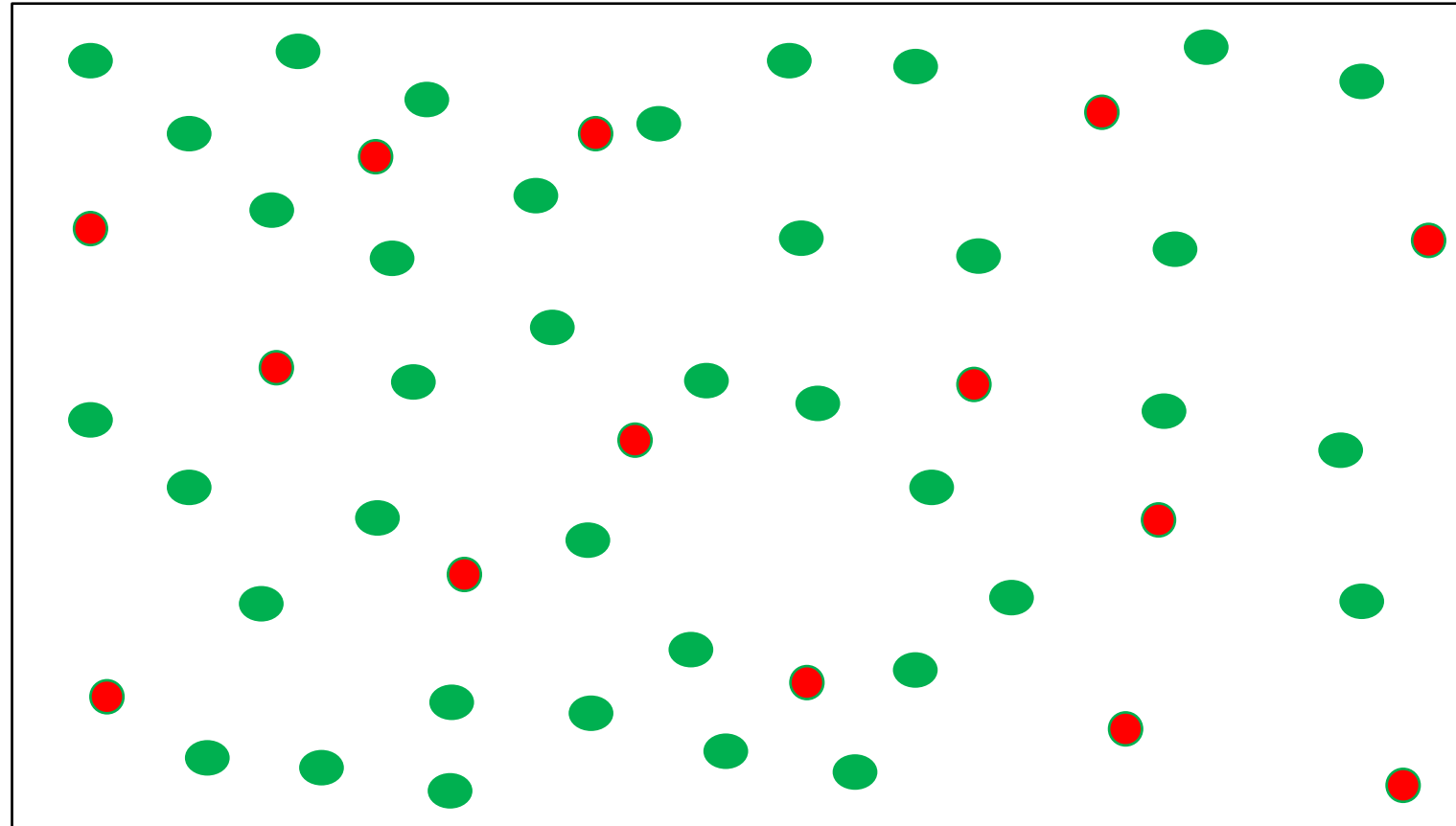
NON-HAZARDOUS WASTE



HAZARDOUS WASTE

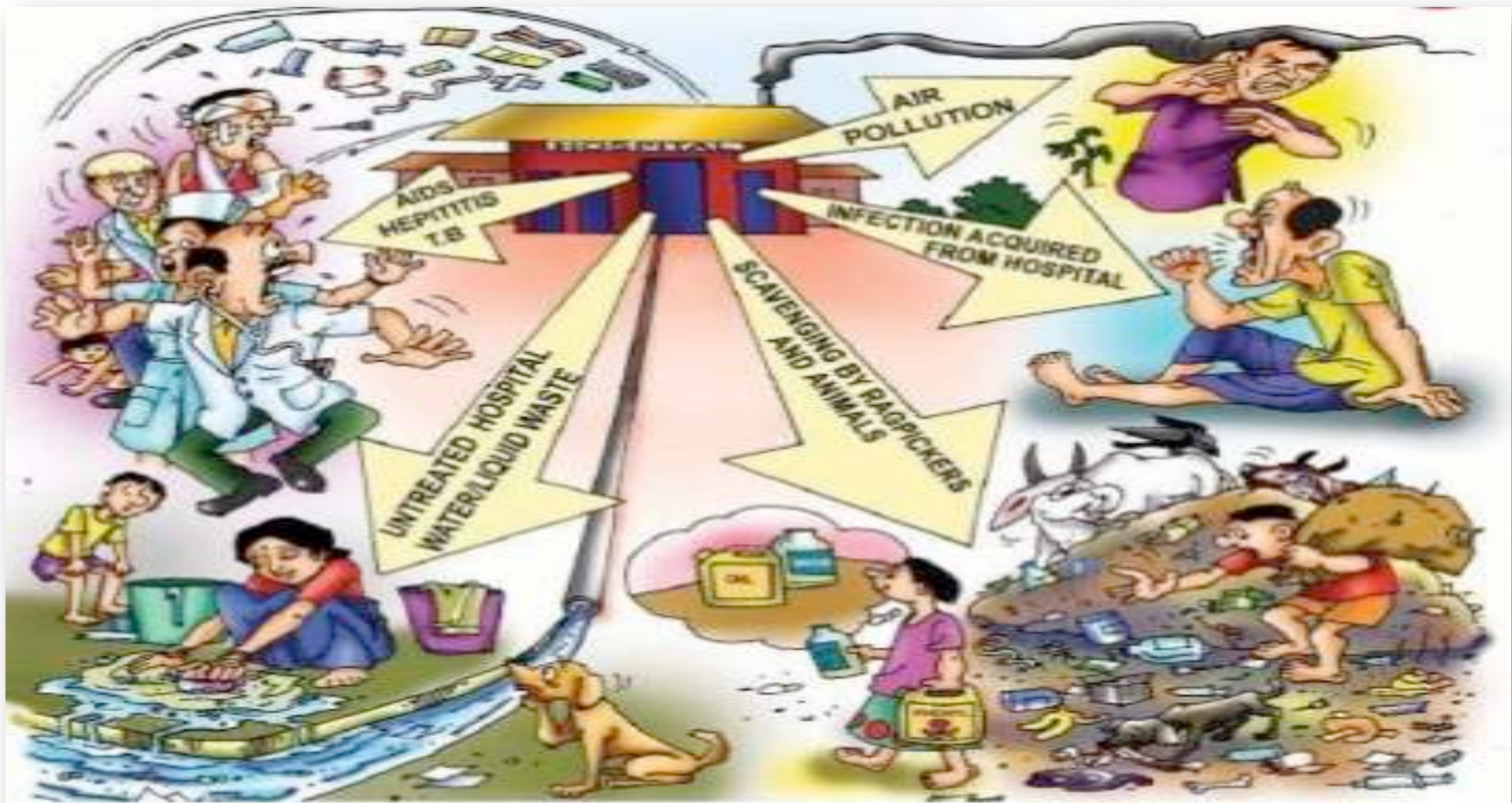


NEED OF SEGREGATION



HAZARDOUS WASTE





Health care waste is a risk to all, it affects us in different ways



BENEFITS OF SEGREGATION

- Reduction of risk of infection & injuries
- Reduction of waste requiring special treatment
- Reduction of treatment and disposal costs



PRINCIPLES OF WASTE SEGREGATION

- Always take place at source
- Done by the person who produces waste
- Uniform throughout the country
- Regularly monitored



CATEGORIZATION

YELLOW



RED



WHITE



BLUE



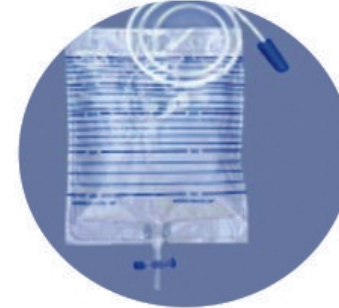
- Human anatomical waste
- Animal anatomical waste
- Soiled waste
- Microbiology, Biotechnology and laboratory waste
- Expired or discarded medicines
- Blood bag



YELLOW



- Tubing
- Bottles
- Catheters
- Urine bags
- Gloves
- Intravenous tubes and sets
- Syringes (without needles and fixed needle syringes)

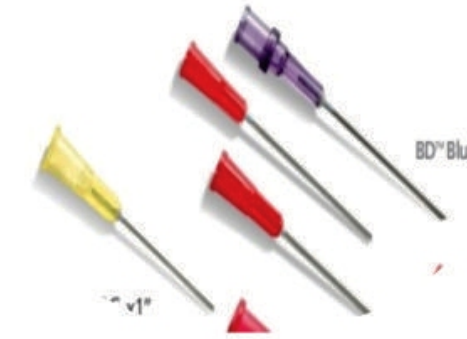


RED



Waste sharps including Metals:

- Needles
- Syringes with fixed needles
- Scalpels
- Blades



WHITE



- **Glassware:**

- broken
- discarded
- contaminated

except those contaminated with cytotoxic wastes.



- **Metallic Body Implants**



BLUE



■ Municipal waste

For Noninfectious - Solid waste



Paper/Plastic



Kitchen Waste/Food



Outer Packing/
Cardboard



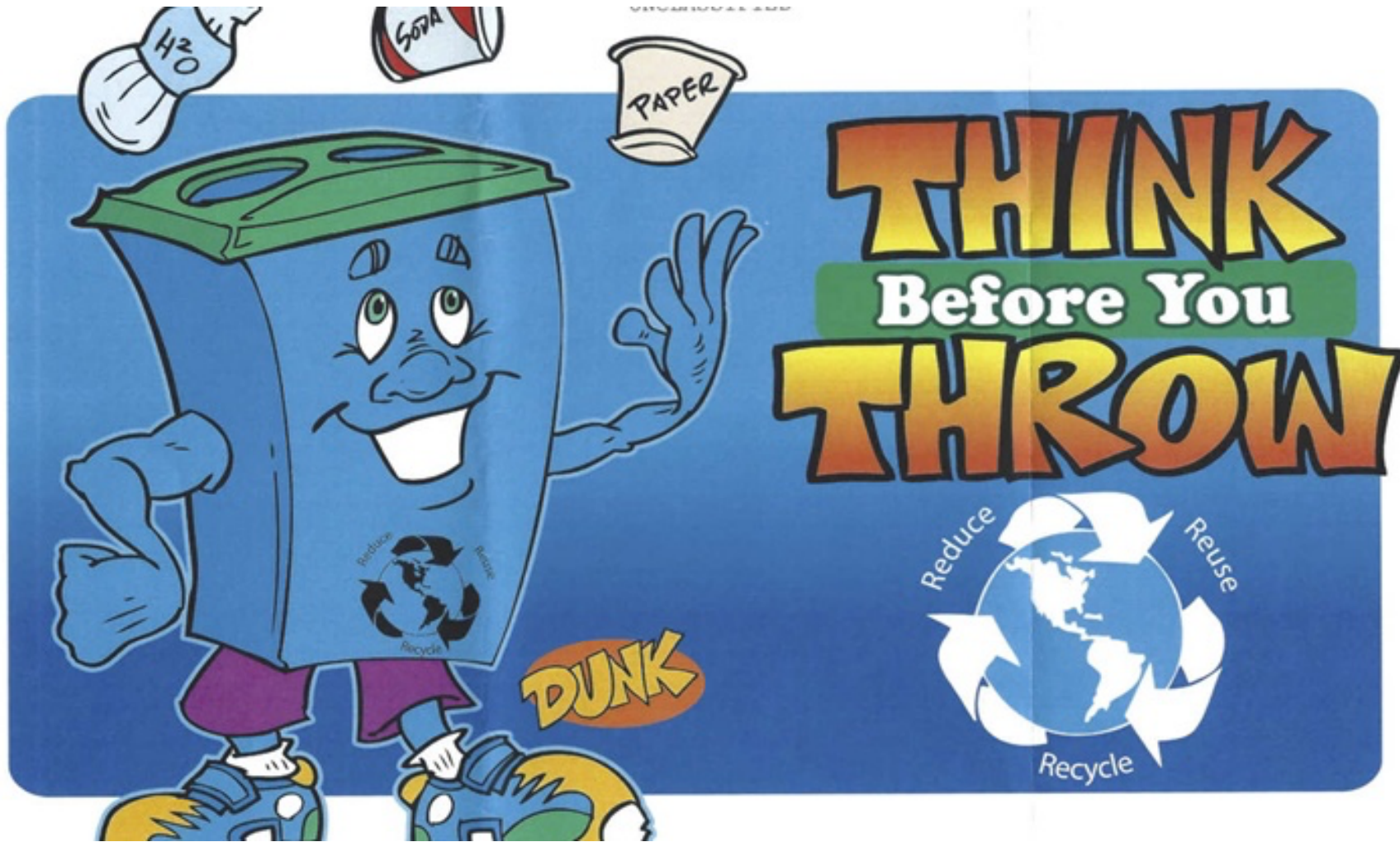
Wrappers



General/ Kitchen Waste

BLACK





THANK YOU.

